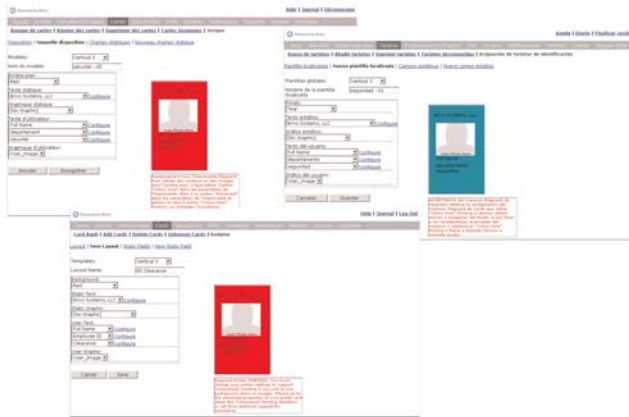


AXIS 209FD-R Network Camera ▶

Axis Communications introduced a network camera designed for use in buses and rail vehicles. The AXIS 209FD-R Network Camera is a palm-sized, rugged unit that can resist vibrations and high humidity in mass transit vehicles. The network camera provides crisp, digital video over an IP network. Measuring only 4 cm high, the AXIS 209FD-R fits in any area of a vehicle. The camera uses progressive scan technology to provide sharp images of moving objects. It delivers up to 30 frames per second in Motion JPEG or MPEG-4 video compression standards. www.axis.com



▶ Brivo ACS WebService

Brivo Systems, a developer of Web applications for access control and security systems, released Version 7.3 of the Brivo ACS WebService application. This major new release lets end-users generate customized badges for both identification and access. It now offers a set of standardized badge templates that administrators can easily customize to meet the specific needs of their organizations. Layouts can include corporate logos, company name, address, and more. Badges can then be individualized using the employee data already maintained in the customer's ACS WebService account, including user photographs. www.brivo.com

Memorex Mini TravelDrive U3 ▶

At barely 2.25" long, 0.85" wide, and 0.27" thick, the new Mini TravelDrive USB flash drive offers a portable working environment, with on-the-go software and 4GB of storage capacity. Utilizing the U3 smart drive technology, the Mini TravelDrive carries not just digital files, but also portable software applications that go everywhere you do and can be used on any PC. The Mini comes bundled with various bonus applications for email, security, file synchronization, and virus detection. www.memorex.com



▶ Bio-NetGuard

Bio-NetGuard provides cost effective access control for WiFi local area networks (LANs). It combines the latest WiFi security and biometric identity verification technologies into your network. Each Bio-NetGuard unit is capable of securing multiple WiFi access points connected to the same router, allowing authenticated users to freely and seamlessly roam between access points – even access points from different vendors – without having to re-authenticate. Integrates into any WPA-compliant access point. True plug and play and takes five minutes to install. www.shimonsystems.com



Dortronics Piezo Switch ▶

The 5277-PZL Series Piezo Switch is an industrial strength switch designed for heavy usage applications to control automatic doors, electric strike/lock or magnetic locks. In addition to its stainless steel mounting plate and sealed solid state, stainless steel exit button, the 5277-PZL Series features a bi-colored LED illumination status ring; it's jumper selectable to show Relay On or Relay Off status with options for red, green or no illumination. The device mounts directly to a standard UL single gang switch box. Weather resistant so it can withstand the rigors and abuse of everyday use. www.dortronics.com



◀ **Schlage FingerKey DX-2400**

The FingerKey DX family of biometric access control readers provides low-cost biometric alternatives designed to secure smaller user populations. The FingerKey DX includes a keypad and LCD display. Expanded memory and Ethernet options are also available. Verification takes less than two seconds. The user simply enters a PIN code or presents a card, which calls up a template to scan or pulls the template from a smartcard. Then, the user places a finger on the FingerKey reader for verification of the template. www.ingersollrand.com

Primera LX400 Color Label Printer ▶

The LX400 Color Label Printer is an inkjet-based printer designed to print short-run, full-color labels at up to 4800 dpi print resolution. The LX400 prints full-color photos, text, graphics and bar code labels. Printed labels are virtually scratch-proof and waterproof. The LX400 is easy to set-up and operate. The LX400 interfaces to either a PC or Mac with a USB connection. www.primeralabel.com



◀ **Brijot BIS-WDS Prime**

The BIS-WDS Prime is a millimeter wave-based camera system that can detect concealed weapons, indoor or outdoor, passively, in real time. Never before has there been a device that could search and locate a bomb on a person without making them stop, conducting a pat down or entering an enclosed portal. The system can search and locate concealed weapons made from a composite, ceramic or plastic (non-ferrous) material. The device can also identify the exact location of a weapon such as a gun or knife hidden on a person. And all of this is done safely, without radiating anything, without requiring subjects to stand still or enter an enclosed portal and at an affordable price. www.brijot.com